



I-494: Airport to 169

Corridors of Commerce Project Limit
Study Area

miles 0 .5 1



Detours Ahead: I-494 Construction Impacts and Options

Commuter Services
July 26, 2023

Your questions, our answers

- A recording of this webinar and the slides will be emailed to all attendees within 10 days
- Questions will be answered at the end of each presentation
- To submit questions please:
 - Use the Q&A tool on Zoom to enter your written question
 - Email questions after the webinar to Kate Meredith at kate@494corridor.org
- Please refrain from using the Chat option to submit questions

Commuter Services is the outreach program of the I-494 Corridor Commission

The I-494 Corridor Commission is a joint powers organization established in 1986 to address concerns about increasing traffic congestion along the I-494 corridor. Member cities include Bloomington, Eden Prairie, Edina, Minnetonka, and Richfield.

In fact:

- There are **more** jobs in this section of the I-494 corridor than anywhere else in the State of Minnesota, including the two downtowns - Minneapolis and St. Paul, combined.
- According to MnDOT, people from 85 of the state's 87 counties travel this section of I-494 **every day**.

About our presenters

In her role as Vice President at Commuter Services, Kate Meredith oversees employer outreach, sustainable commute programming and campaigns.

Kate is a graduate of the University of Minnesota, with a bachelor's degree in marketing and women's studies.

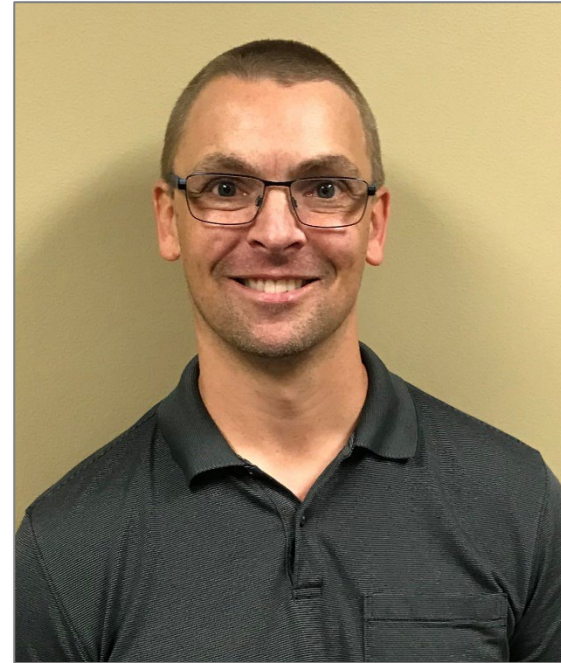


About our presenters

Tim Clyne is one of the MnDOT Construction Managers overseeing all of the grading and paving on the I-494 Design Build Project.

Tim is a graduate of the University of Minnesota, with bachelor's and master's degrees in Civil Engineering. He has been with MnDOT since 2005, working in various offices including the MnROAD Research Project and Metro District Materials.

His I-494: Airport to Highway 169 counterpart, Tera Rehnberg, manages the project's bridge and wall structure elements.



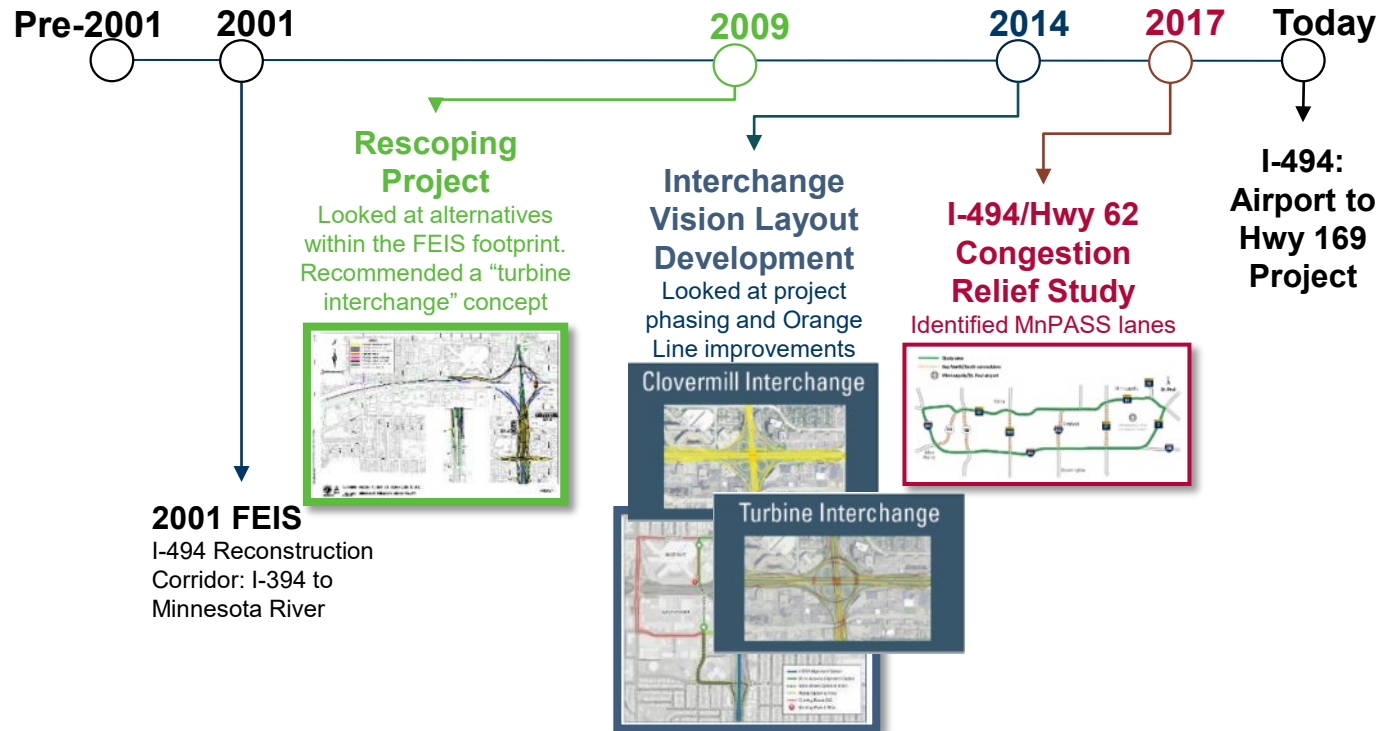
MnDOT

- I-494 Airport to Highway 169 Full Vision
- Project Timelines from 2023 to 2026
- Traffic Impacts to Expect This Year
- Detour Routes
- Project Improvements and Related Details
- Nearby Projects: I-494 Minnesota River Bridge and I-35W Bloomington

Commuter Services

- Commuter Options

Project Development



Partner Collaboration and Involvement

Partners

Cities of Richfield, Bloomington,
Edina, Eden Prairie

Hennepin County

Metro Transit

Metropolitan Council

Metropolitan Airports
Commission

Federal Highway Administration
(FHWA)

Stakeholders

Corridor Coalitions (I494 Corridor
Commission, I35W Solutions
Alliance)

Local Businesses

Residents

Statewide Travelers

Regional/Local Travelers

Metro District Management

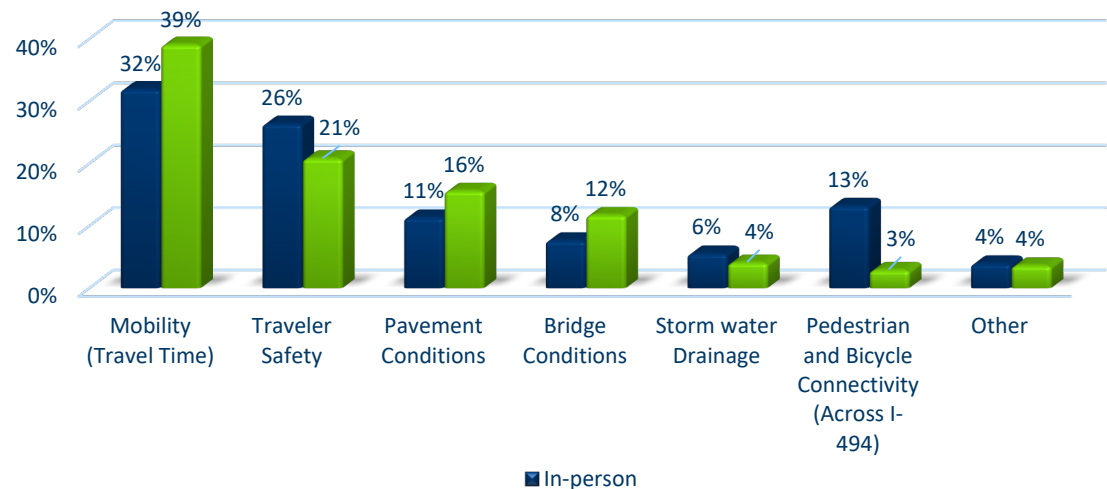
MnDOT Leadership

Purpose and Need

Project Purpose

Improve safety, mobility, travel time reliability, address asset conditions, and promote transit mobility on I-494 between TH 5 and US 169

“In your opinion, what is most important for MnDOT to address when redesigning Interstate 494 from the Airport to Hwy 169? (Choose up to 3)”



Evaluation Criteria



Constructability



Cost/Budget



Community



Operations



Equity

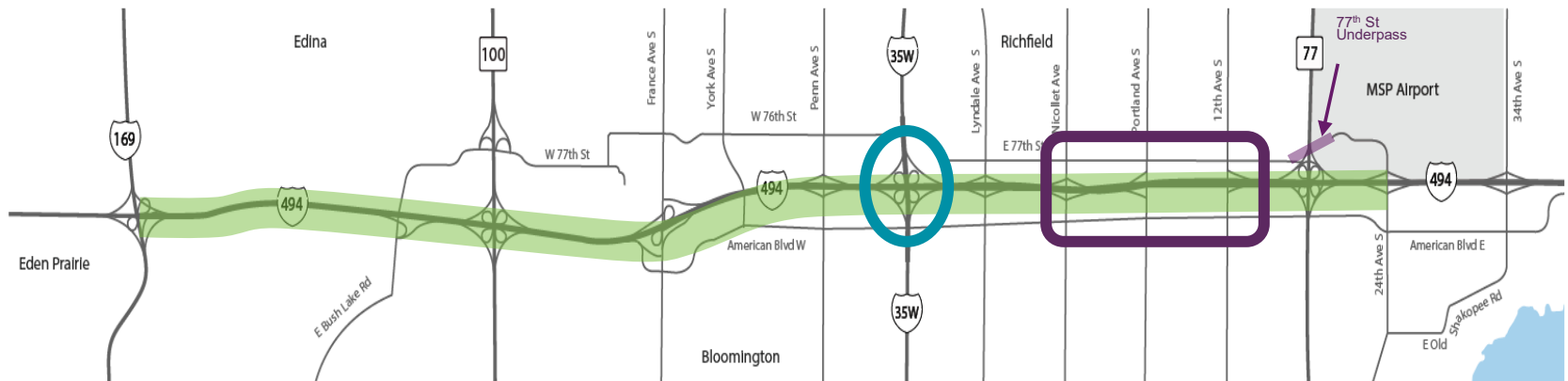


Funding



Asset Management

I-494 Airport to Hwy 169 Full Vision



E-ZPass from Hwy 169 to 24th Ave



I-494/I-35W interchange



Access changes at Nicollet, Portland and 12th

Implementation Plan

Implementation Plan

Project 1
Elements 3, 4, 5 (partial) and 7

Letting date - April 2023
 Construction duration - 2023 to 2026
 \$320M construction let budget \$419M
 Remaining priority issues - EA, ROW

Project 2
Element 6

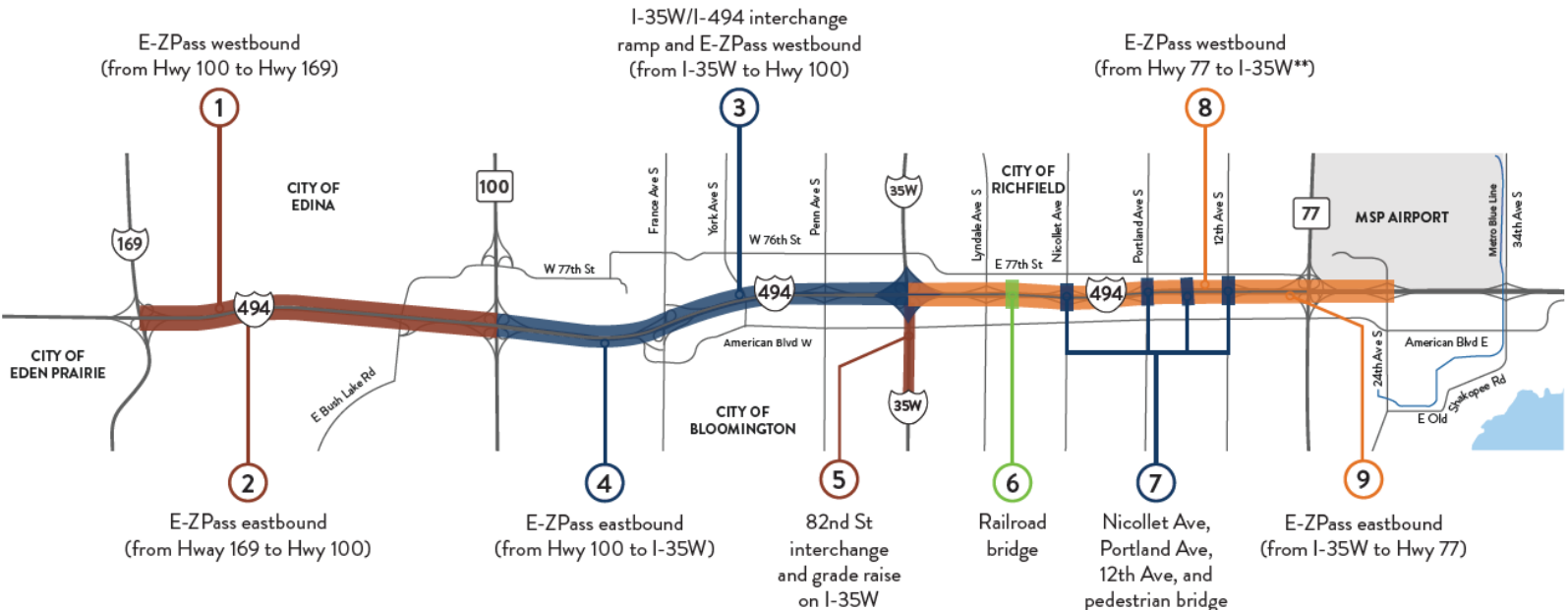
Letting date - TBD but no earlier than 2024
 Construction duration - TBD
 Cost range - \$10M to \$20M
 Remaining priority issues - cost estimate, design (to be done by Fall 2023), ROW, RR coordination, funding

Project 3
Elements 8 and 9

Letting date - TBD
 Construction duration - TBD
 Cost range - \$60M to \$100M
 Remaining priority issues - project development, cost estimate, funding

Project 4
Elements 1, 2, and 5

Letting date - TBD
 Construction duration - TBD
 Cost range - \$50M to \$90M
 Remaining priority issues - project development, cost estimate, funding

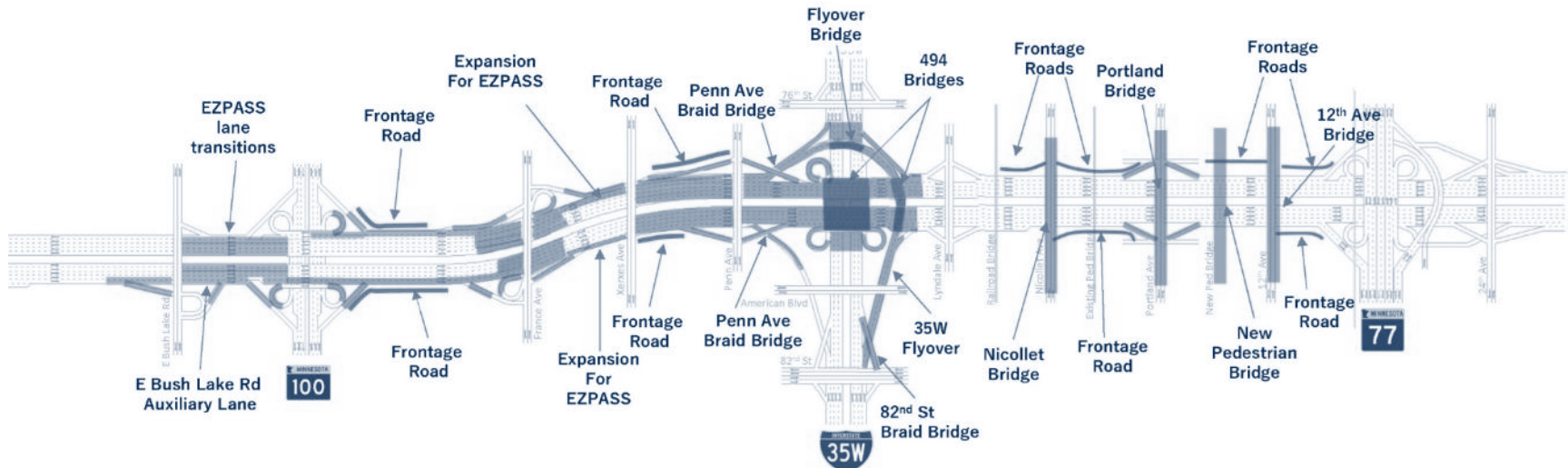


(E-ZPass is formerly known as MnPASS)

**Added capacity begins at 24th Ave with E-ZPass designation just west of TH 77

SP 2785-424: I494 Airport to Hwy 169 Design-Build Project Scope

- E-ZPass on I-494 in both directions between East Bush Lake Road and I-35W
- Reconstruct I-494/I-35W interchange to turbine design
- Reconfigure access at Nicollet, Portland, and 12th Avenues
- Construct pedestrian bridge at Chicago Ave



Bid Letting

January 18, 2023 Price Proposal Opening			
	Technical Proposal Score	Proposal Price	Adjusted Score (Price / Technical Score)
Team A	92.05	\$ 414,535,000.00	4,503,368
C.S. McCrossan	88.85	\$ 377,412,915.00	4,247,754
Team C	82.17	\$ 456,745,000.00	5,558,537

Contract Status

- March 3, 2023: Contract awarded
- March 21, 2023: Contract fully executed
- April 24, 2023: Notice to Proceed 1 (temporary work)
- July 17, 2023: Notice to Proceed 2 (permanent work)
- Substantial Completion September 2026

Construction Schedule Overview

- 2023
 - Temporary crossovers and widening, EB I-494 near TH 100, north ramps at I-35W
- 2024
 - WB I-494 near TH 100, EB I-494 from TH 100 to I-35W, Chicago Ave Pedestrian Bridge
- 2025
 - WB I-494 from TH 100 to I-35W, finish I-35W interchange, Portland Ave Interchange
- 2026
 - E-ZPass System, Nicollet Ave & 12th Ave Bridges

Current Construction Impacts

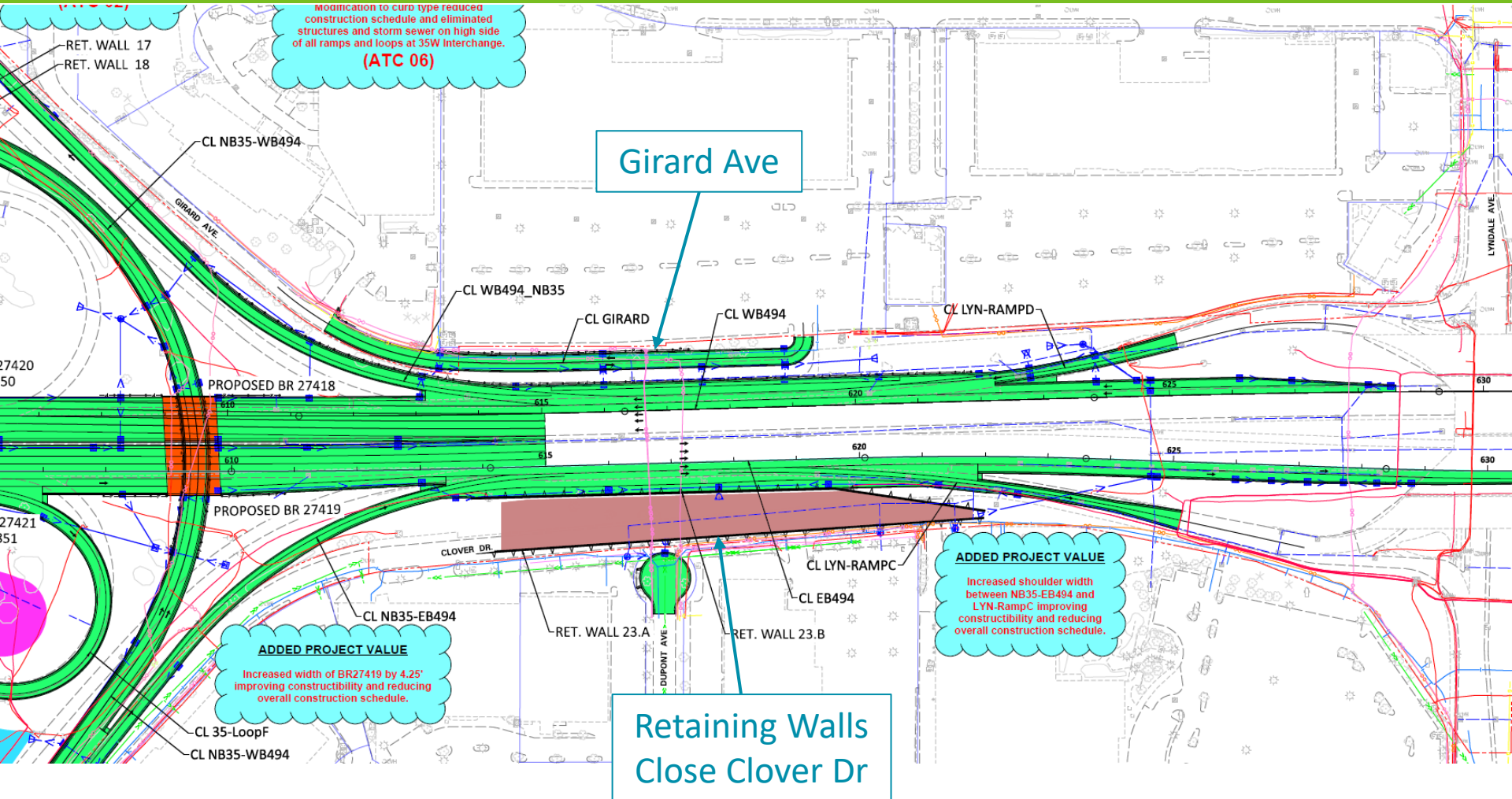
- Temporary traffic mitigation on TH 62: Restriping auxiliary lane on westbound TH 62 from Valley View Rd to TH 100
- Intelligent Workzone – Installation of travel information signing
- Installation of mainline I-494 crossovers and widening between East Bush Lake Rd and I-35W
- Short term traffic impacts on MnDOT and local roads to facilitate design work (soil borings, sewer video inspection, etc.)

Upcoming Construction Impacts

- Utility relocations
- Permanent work near TH 100 and I-35W began in mid July
- Potential Winter 2023-2024 Work: Retaining Walls, I-494 / I-35W turbine flyover bridge substructures, Chicago Ave Pedestrian Bridge substructures



2023 Local Impacts



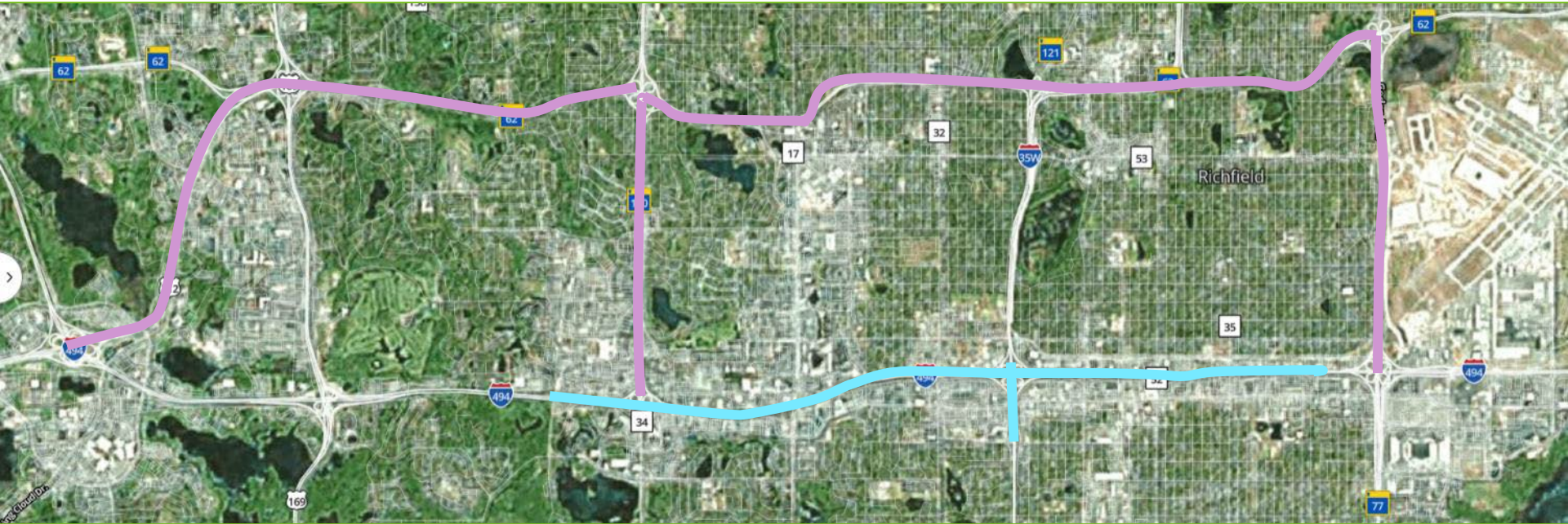
Temporary Construction



Work began June 5th!

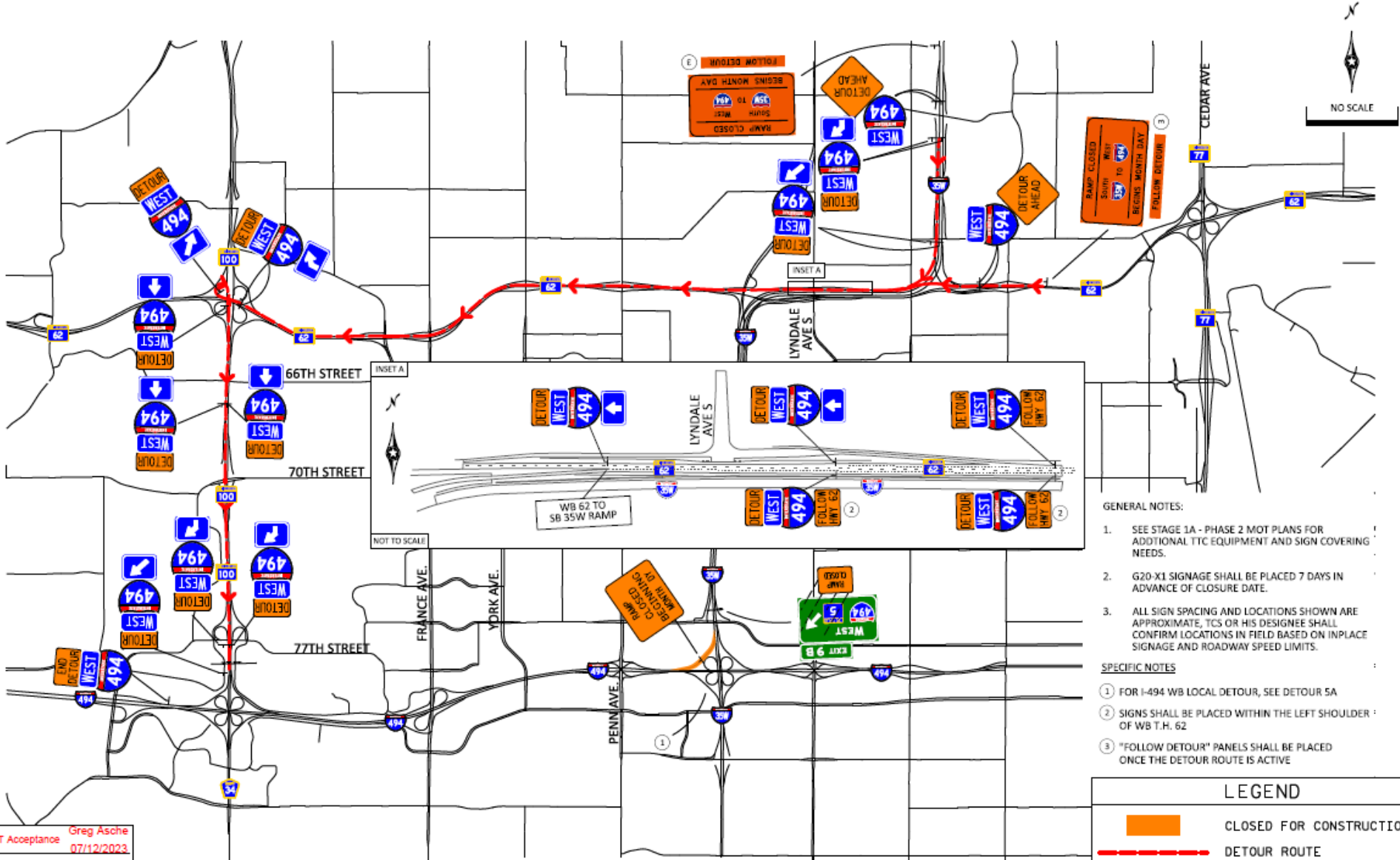
Temporary Crossover Paving



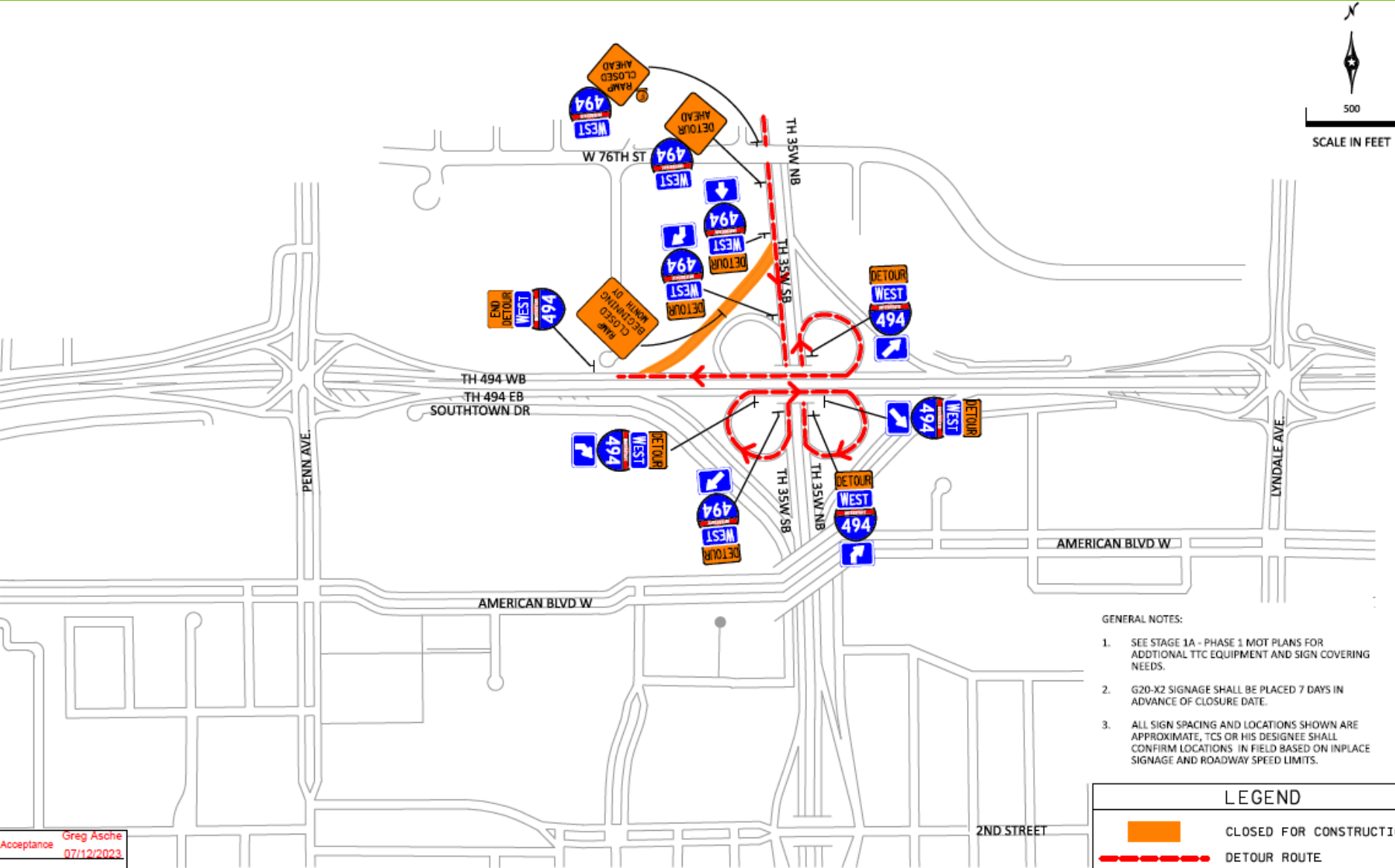


Road / Ramp Closures and Detours

SB 35W to WB 494 – Regional



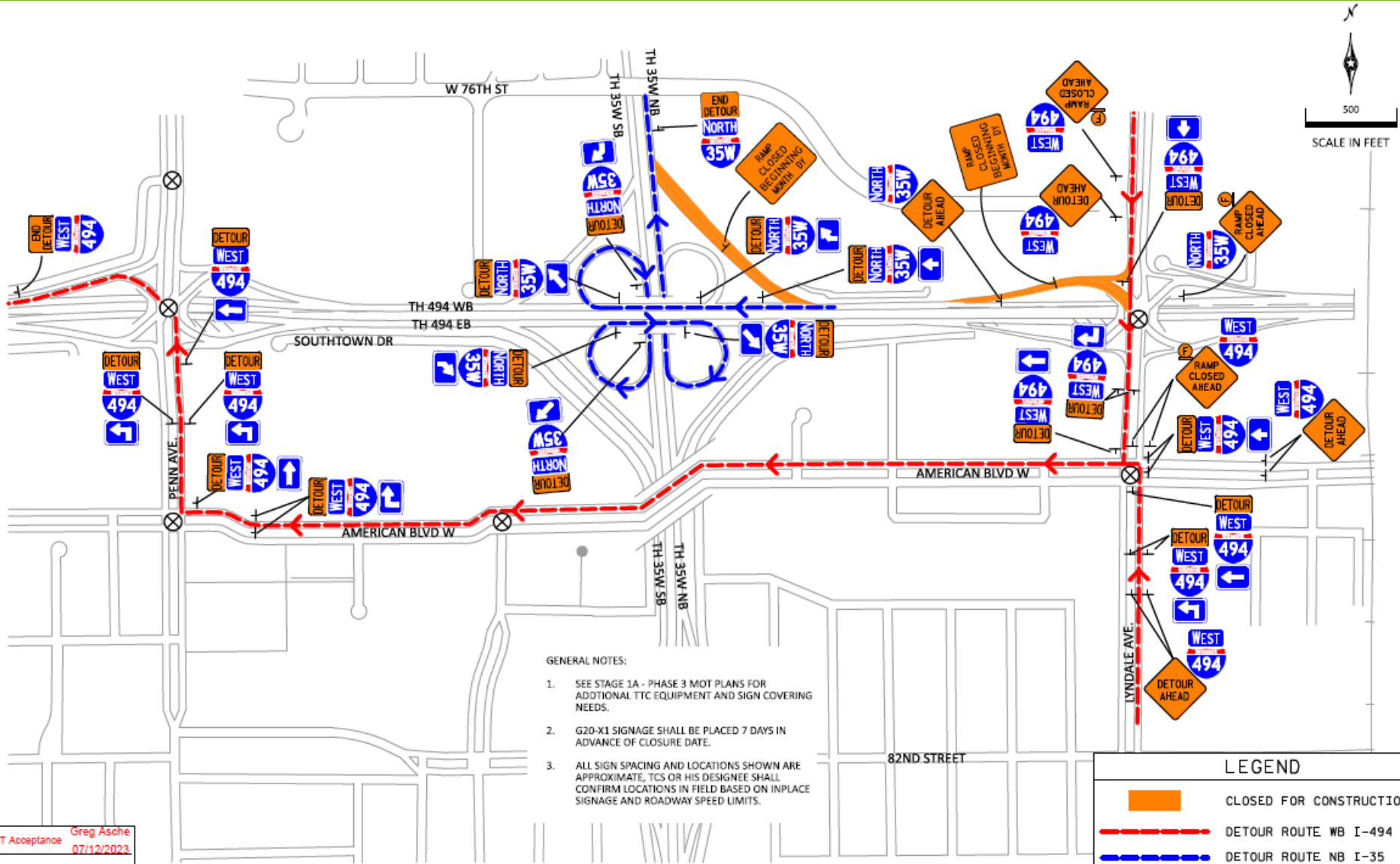
SB 35W to WB 494 – Local



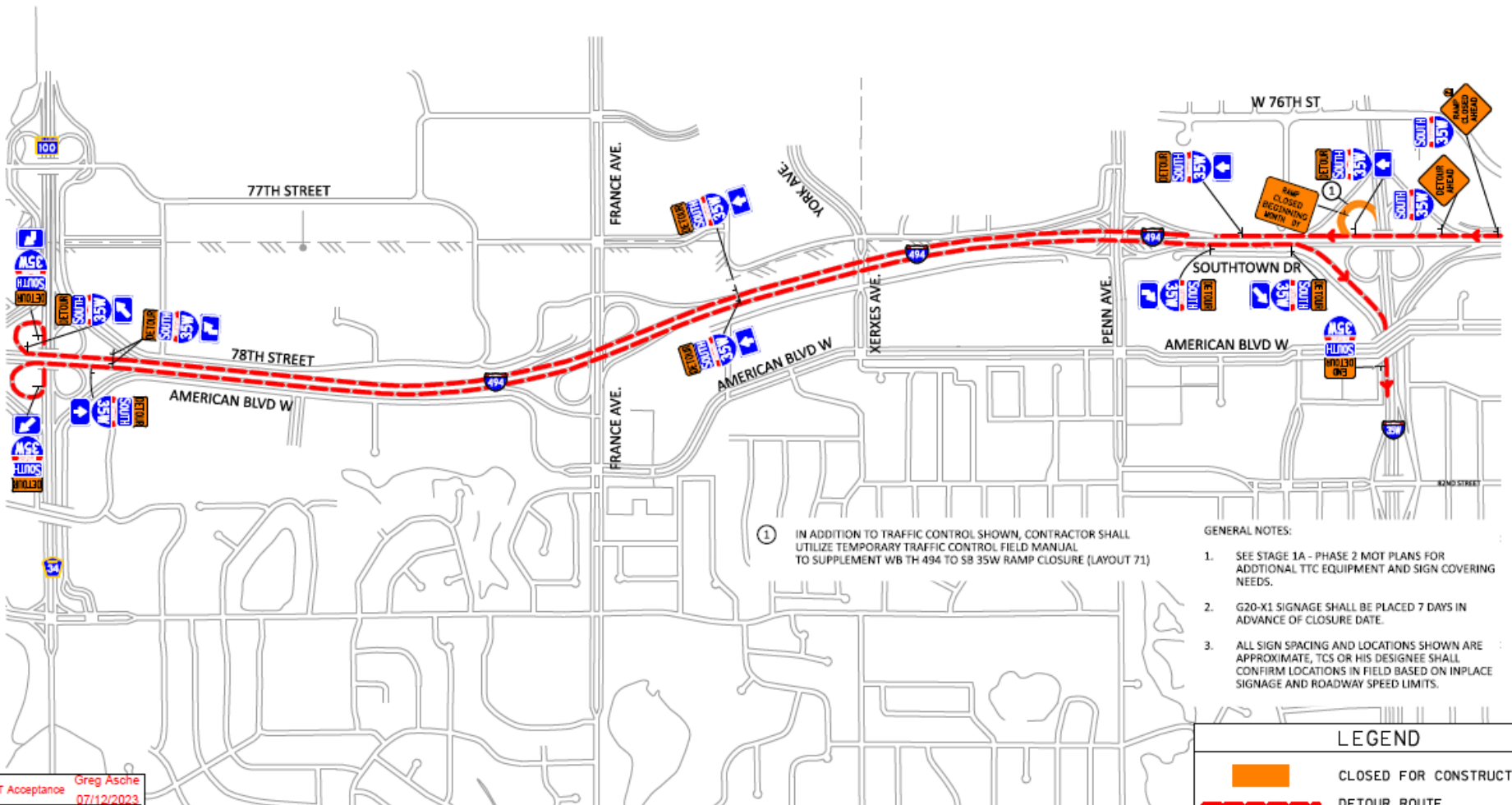
- GENERAL NOTES:
1. SEE STAGE 1A - PHASE 1 MOT PLANS FOR ADDITIONAL TTC EQUIPMENT AND SIGN COVERING NEEDS.
 2. G20-X2 SIGNAGE SHALL BE PLACED 7 DAYS IN ADVANCE OF CLOSURE DATE.
 3. ALL SIGN SPACING AND LOCATIONS SHOWN ARE APPROXIMATE, TCS OR HIS DESIGNEE SHALL CONFIRM LOCATIONS IN FIELD BASED ON INPLACE SIGNAGE AND ROADWAY SPEED LIMITS.

LEGEND	
	CLOSED FOR CONSTRUCTION
	DETOUR ROUTE

Lyndale to WB 494 and WB 494 to NB 35W



WB 494 to SB 35W

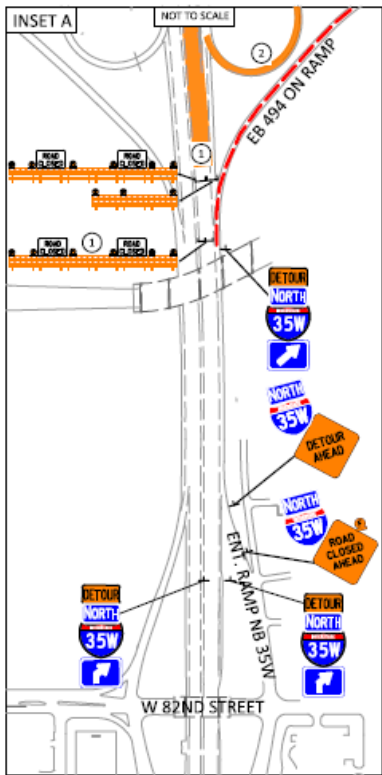


① IN ADDITION TO TRAFFIC CONTROL SHOWN, CONTRACTOR SHALL UTILIZE TEMPORARY TRAFFIC CONTROL FIELD MANUAL TO SUPPLEMENT WB TH 494 TO SB 35W RAMP CLOSURE (LAYOUT 71)

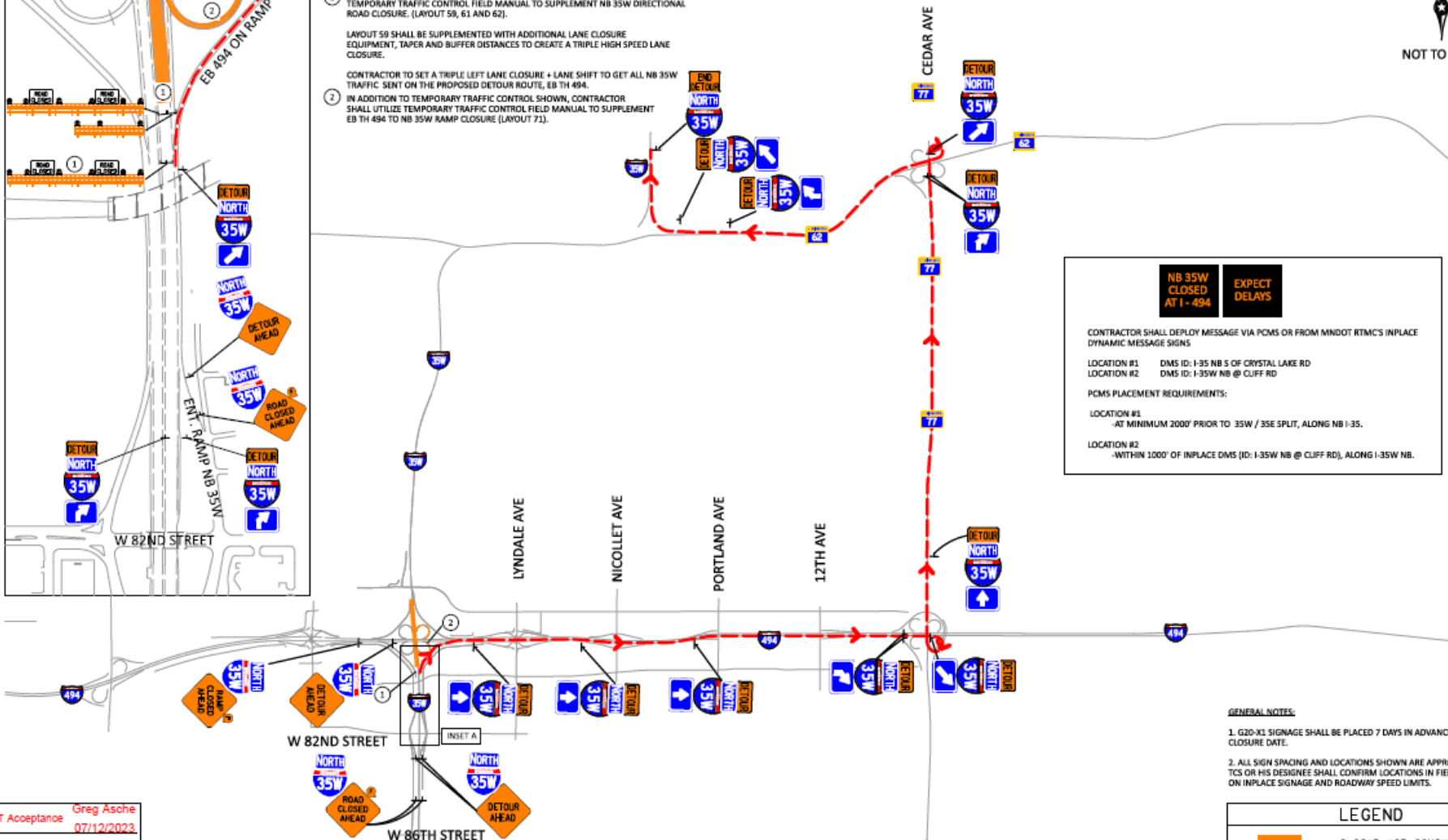
- GENERAL NOTES:
1. SEE STAGE 1A - PHASE 2 MOT PLANS FOR ADDITIONAL TTC EQUIPMENT AND SIGN COVERING NEEDS.
 2. G20-X1 SIGNAGE SHALL BE PLACED 7 DAYS IN ADVANCE OF CLOSURE DATE.
 3. ALL SIGN SPACING AND LOCATIONS SHOWN ARE APPROXIMATE, TCS OR HIS DESIGNEE SHALL CONFIRM LOCATIONS IN FIELD BASED ON INPLACE SIGNAGE AND ROADWAY SPEED LIMITS.

LEGEND	
	CLOSED FOR CONSTRUCTION
	DETOUR ROUTE

NB 35W



- IN ADDITION TO TEMPORARY TRAFFIC CONTROL SHOWN, CONTRACTOR SHALL UTILIZE TEMPORARY TRAFFIC CONTROL FIELD MANUAL TO SUPPLEMENT NB 35W DIRECTIONAL ROAD CLOSURE. (LAYOUT 59, 61 AND 62).
LAYOUT 59 SHALL BE SUPPLEMENTED WITH ADDITIONAL LANE CLOSURE EQUIPMENT, TAPER AND BUFFER DISTANCES TO CREATE A TRIPLE HIGH SPEED LANE CLOSURE.
CONTRACTOR TO SET A TRIPLE LEFT LANE CLOSURE + LANE SHIFT TO GET ALL NB 35W TRAFFIC SENT ON THE PROPOSED DETOUR ROUTE, EB TH 494.
- IN ADDITION TO TEMPORARY TRAFFIC CONTROL SHOWN, CONTRACTOR SHALL UTILIZE TEMPORARY TRAFFIC CONTROL FIELD MANUAL TO SUPPLEMENT EB TH 494 TO NB 35W RAMP CLOSURE (LAYOUT 71).



NB 35W CLOSED AT I-494 **EXPECT DELAYS**

CONTRACTOR SHALL DEPLOY MESSAGE VIA PCMS OR FROM MNDOT RTMC'S INPLACE DYNAMIC MESSAGE SIGNS

LOCATION #1 DMS ID: I-35 NB S OF CRYSTAL LAKE RD
 LOCATION #2 DMS ID: I-35W NB @ CLIFF RD

PCMS PLACEMENT REQUIREMENTS:

LOCATION #1
 -AT MINIMUM 2000' PRIOR TO 35W / 35E SPLIT, ALONG NB I-35.

LOCATION #2
 -WITHIN 1000' OF INPLACE DMS (ID: I-35W NB @ CLIFF RD), ALONG I-35W NB.

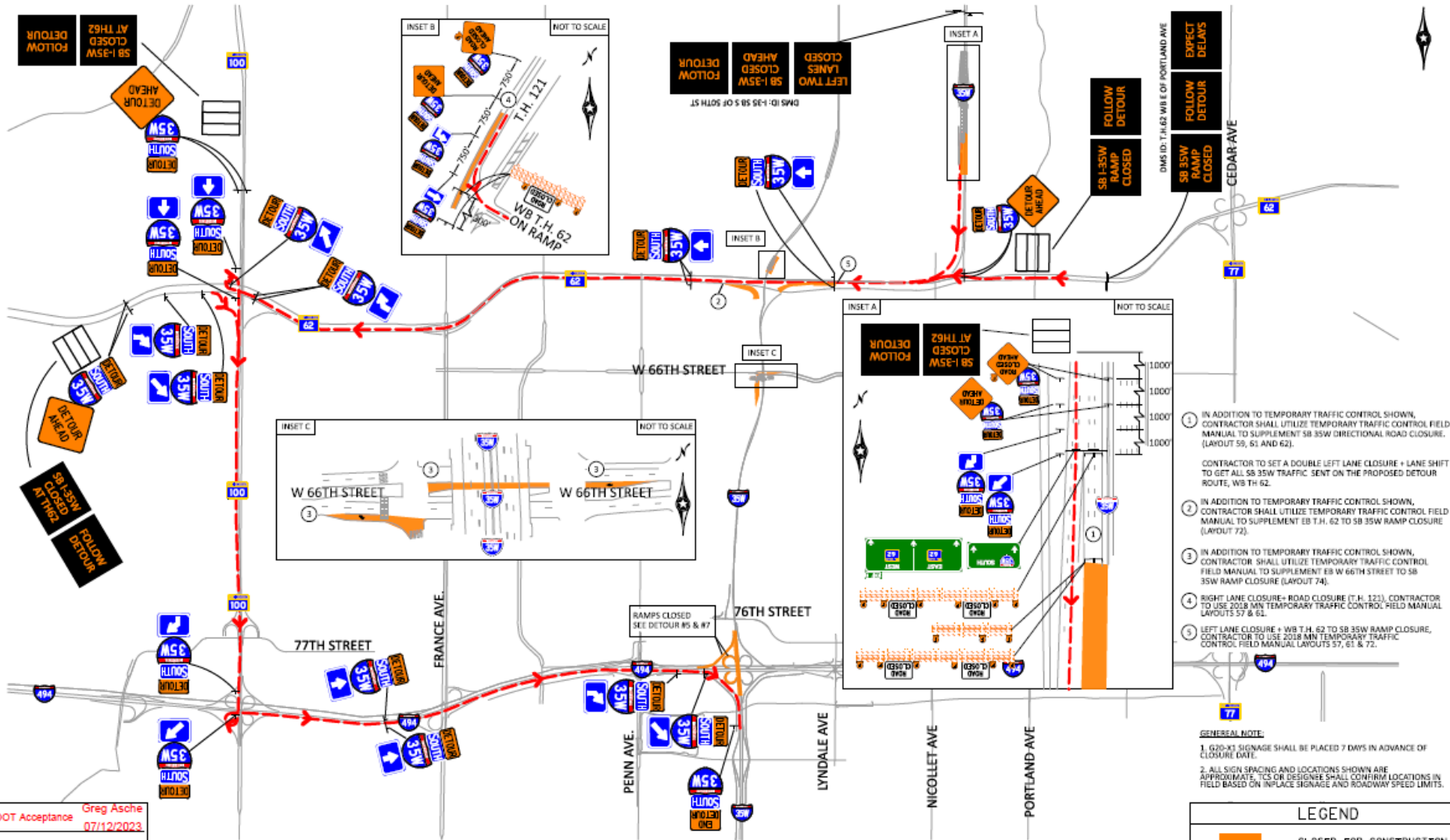
- GENERAL NOTES:**
- G20-XI SIGNAGE SHALL BE PLACED 7 DAYS IN ADVANCE OF CLOSURE DATE.
 - ALL SIGN SPACING AND LOCATIONS SHOWN ARE APPROXIMATE, TCS OR HIS DESIGNEE SHALL CONFIRM LOCATIONS IN FIELD BASED ON INPLACE SIGNAGE AND ROADWAY SPEED LIMITS.

LEGEND	
	CLOSED FOR CONSTRUCTION
	DETOUR ROUTE

JT Acceptance Greg Asoche
 07/12/2023

M. McCrossin
 07/13/2023

SB 35W



- IN ADDITION TO TEMPORARY TRAFFIC CONTROL SHOWN, CONTRACTOR SHALL UTILIZE TEMPORARY TRAFFIC CONTROL FIELD MANUAL TO SUPPLEMENT SB 35W DIRECTIONAL ROAD CLOSURE (LAYOUT 55, 61 AND 62).
- CONTRACTOR TO SET A DOUBLE LEFT LANE CLOSURE + LANE SHIFT TO GET ALL SB 35W TRAFFIC SENT ON THE PROPOSED DETOUR ROUTE, WB TH 62.
- IN ADDITION TO TEMPORARY TRAFFIC CONTROL SHOWN, CONTRACTOR SHALL UTILIZE TEMPORARY TRAFFIC CONTROL FIELD MANUAL TO SUPPLEMENT EB W 66TH STREET TO SB 35W RAMP CLOSURE (LAYOUT 72).
- RIGHT LANE CLOSURE- ROAD CLOSURE (T.H. 121), CONTRACTOR TO USE 2018 MN TEMPORARY TRAFFIC CONTROL FIELD MANUAL LAYOUTS 57 & 61.
- LEFT LANE CLOSURE + WB T.H. 62 TO SB 35W RAMP CLOSURE, CONTRACTOR TO USE 2018 MN TEMPORARY TRAFFIC CONTROL FIELD MANUAL LAYOUTS 57, 61 & 72.

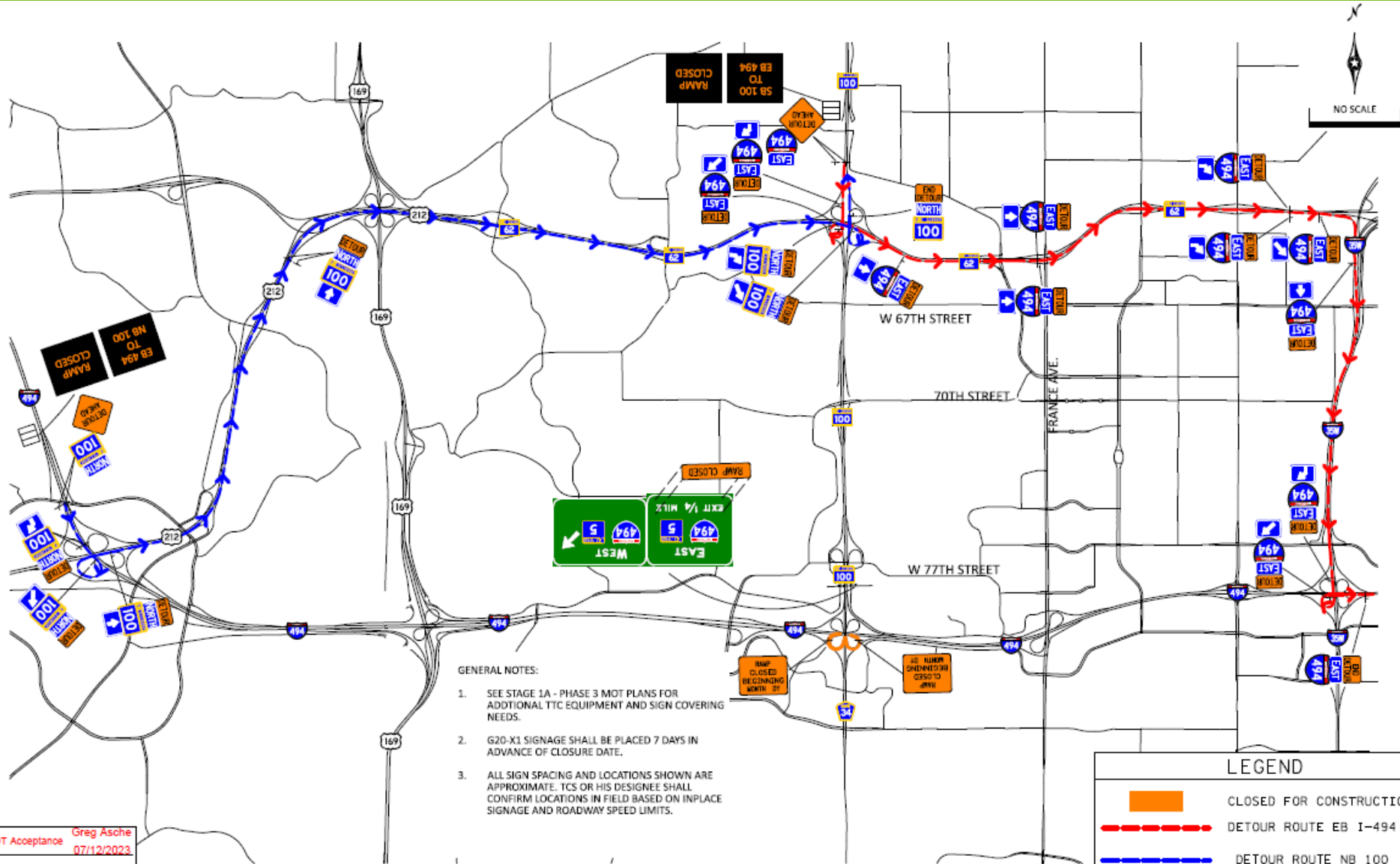
GENERAL NOTE:

- G20-41 SIGNAGE SHALL BE PLACED 7 DWS IN ADVANCE OF CLOSURE DATE.
- ALL SIGN SPACING AND LOCATIONS SHOWN ARE APPROXIMATE. TCS OR DESIGNER SHALL CONFIRM LOCATIONS IN FIELD BASED ON IN-PLACE SIGNAGE AND ROADWAY SPEED LIMITS.

LEGEND	
	CLOSED FOR CONSTRUCTION
	DETOUR ROUTE

VnDOT Acceptance Greg Asche
07/12/2023
C.S. McCrossan
07/12/2023

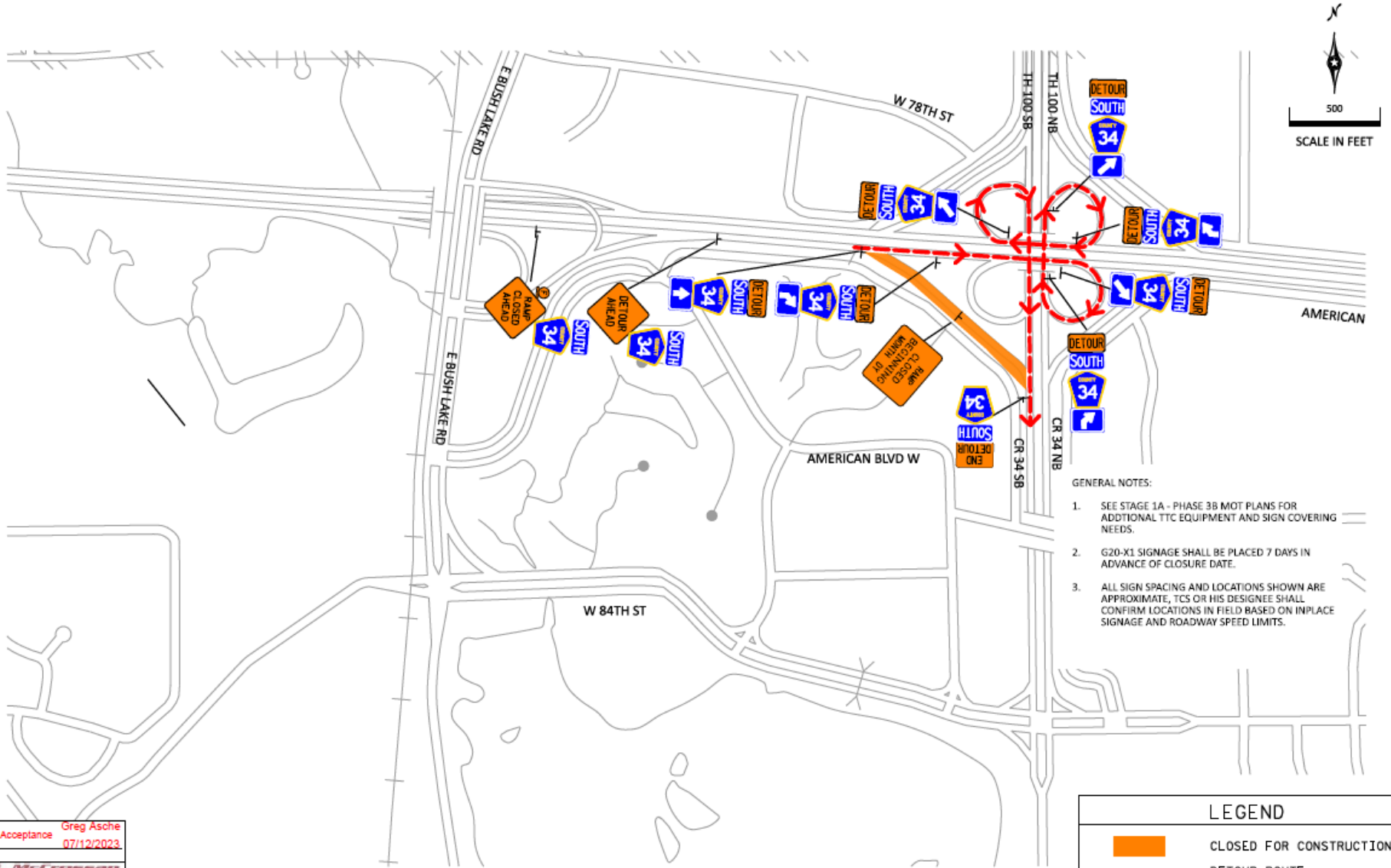
EB 494 to NB 100 and SB 100 to EB 494



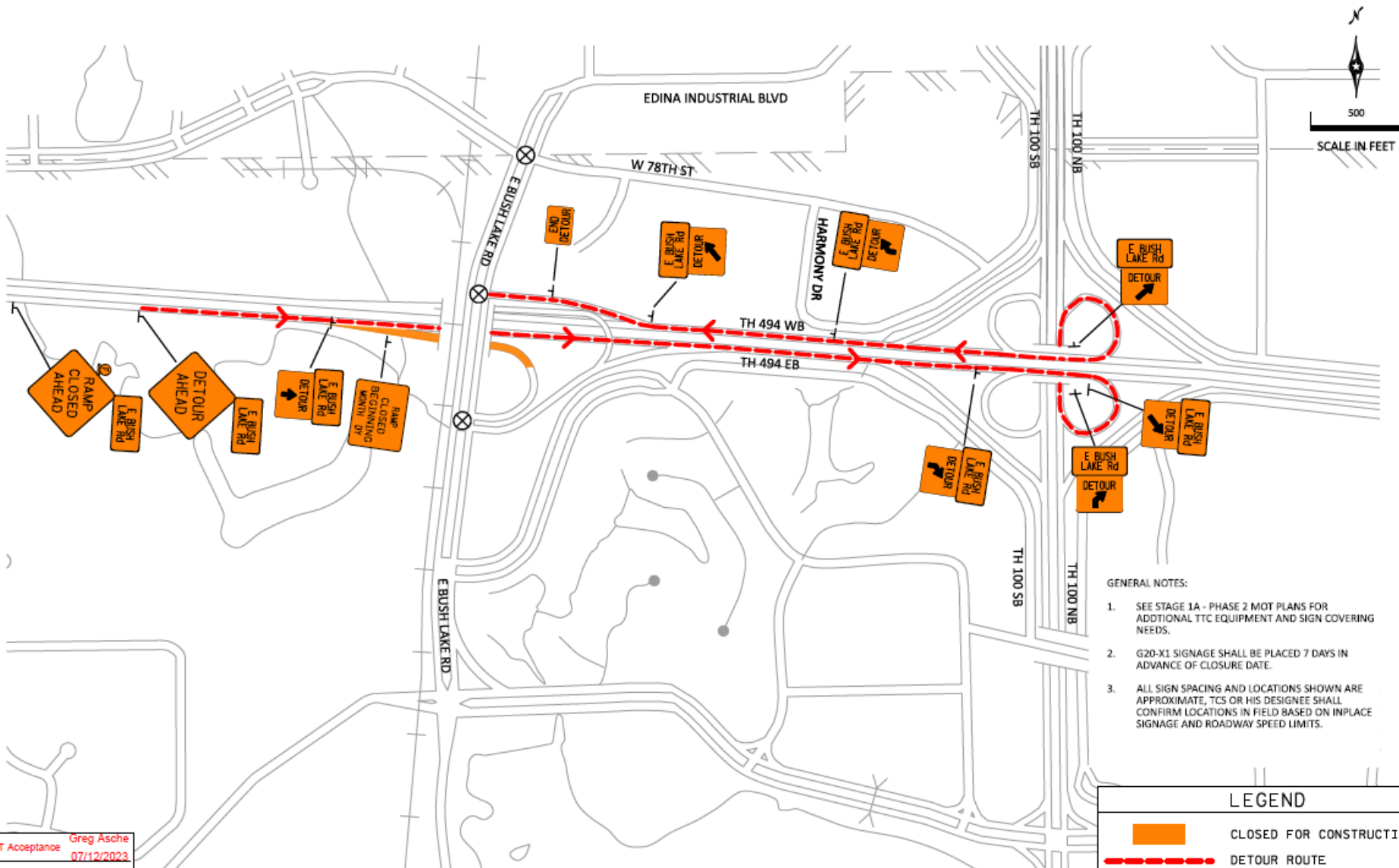
- GENERAL NOTES:
1. SEE STAGE 1A - PHASE 3 MOT PLANS FOR ADDITIONAL TTC EQUIPMENT AND SIGN COVERING NEEDS.
 2. G20-X1 SIGNAGE SHALL BE PLACED 7 DAYS IN ADVANCE OF CLOSURE DATE.
 3. ALL SIGN SPACING AND LOCATIONS SHOWN ARE APPROXIMATE. TCS OR HIS DESIGNEE SHALL CONFIRM LOCATIONS IN FIELD BASED ON INPLACE SIGNAGE AND ROADWAY SPEED LIMITS.

LEGEND	
	CLOSED FOR CONSTRUCTION
	DETOUR ROUTE EB I-494
	DETOUR ROUTE NB 100

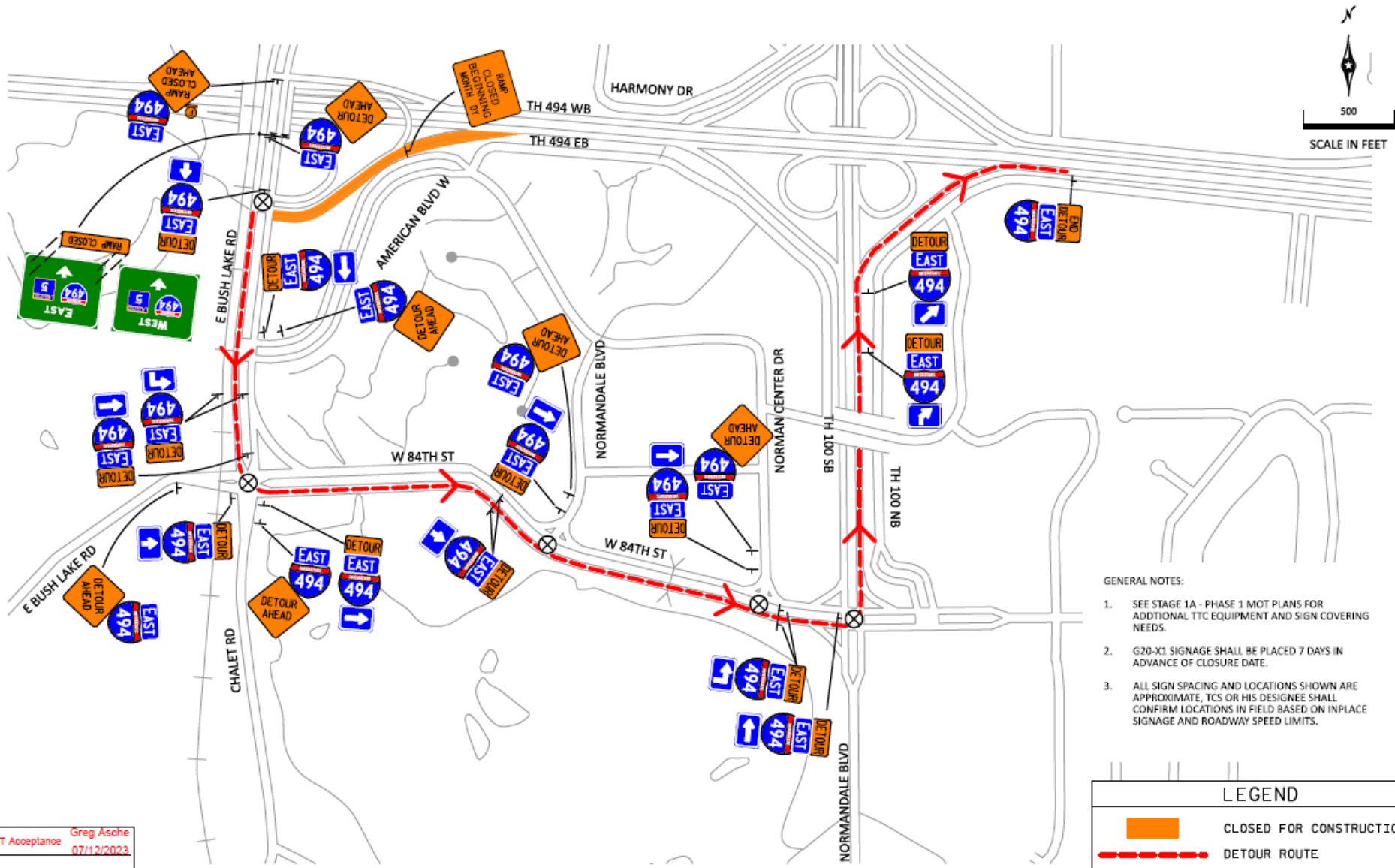
EB 494 to SB 100





EB 494 to East Bush Lake Rd



East Bush Lake Rd to EB 494

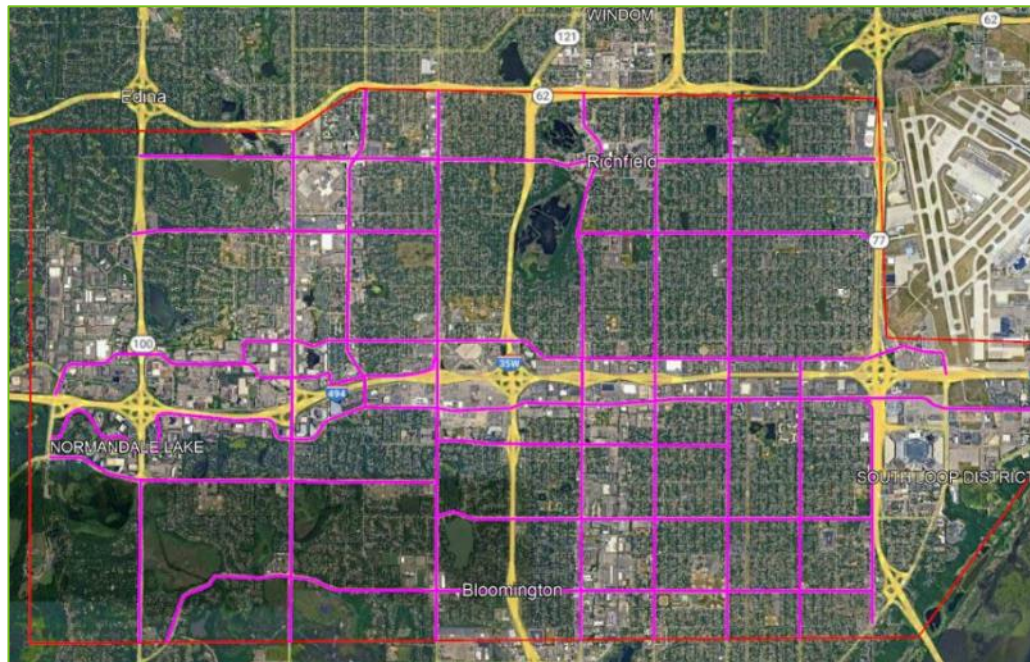


- GENERAL NOTES:
1. SEE STAGE 1A - PHASE 1 MOT PLANS FOR ADDITIONAL TTC EQUIPMENT AND SIGN COVERING NEEDS.
 2. G20-X1 SIGNAGE SHALL BE PLACED 7 DAYS IN ADVANCE OF CLOSURE DATE.
 3. ALL SIGN SPACING AND LOCATIONS SHOWN ARE APPROXIMATE, TCS OR HIS DESIGNEE SHALL CONFIRM LOCATIONS IN FIELD BASED ON INPLACE SIGNAGE AND ROADWAY SPEED LIMITS.

LEGEND	
	CLOSED FOR CONSTRUCTION
	DETOUR ROUTE

Local Transportation Management Plan

1. Use ClearGuide to monitor system and identify issues
2. Further investigate mobility and safety issues
3. Identify and implement mitigation strategy



Local Traffic Mitigation Strategies

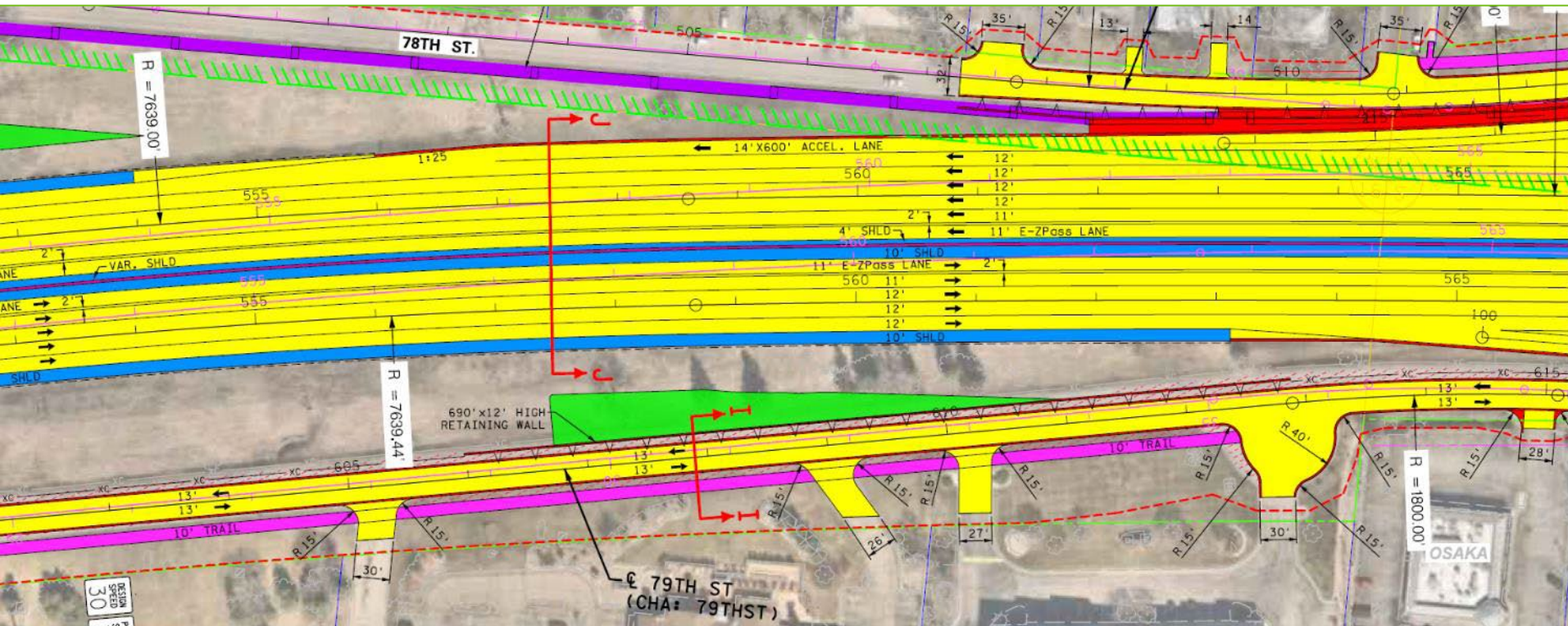
- Temporary signals
- Turn lane additions
- Signal system modifications
- Restriping / access management
- ADA improvements (rapid flashing beacons or curb bumpouts)
- Temporary speed signs
- Sets of speed cushions
- Road closure setups

Up to 20 temporary improvements



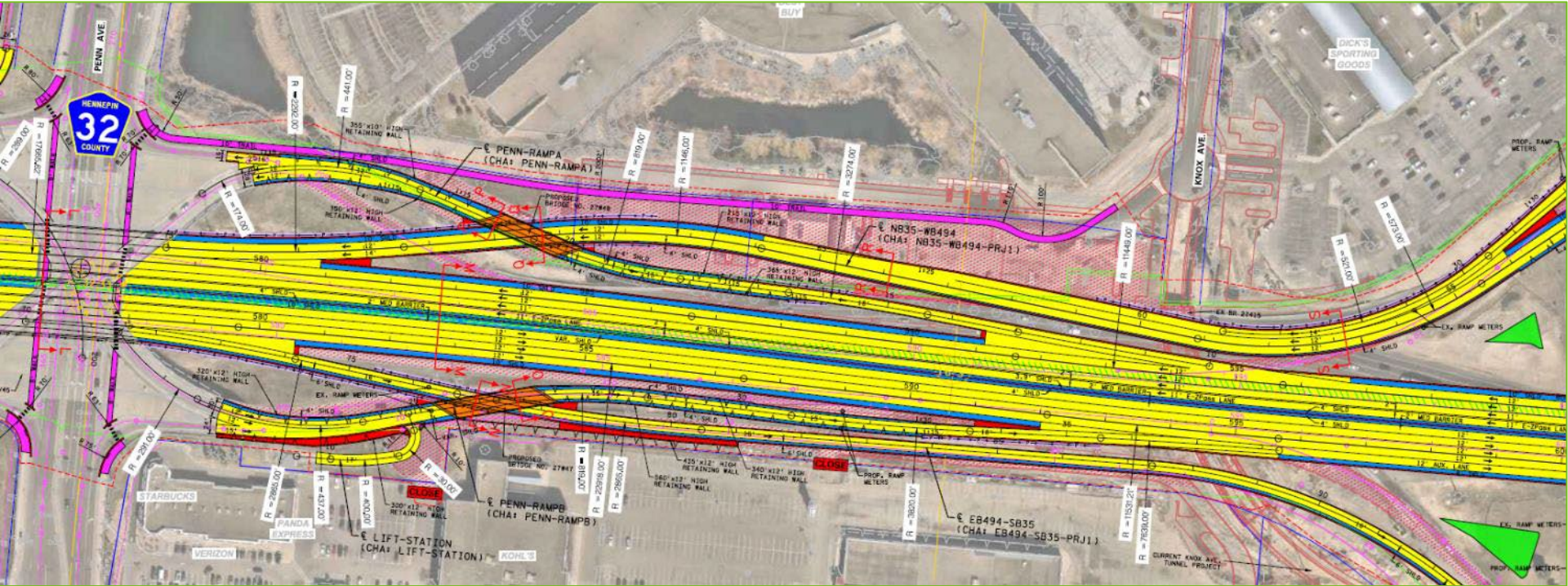
Project Improvements

Widened and Reconstructed Pavement & Bridges



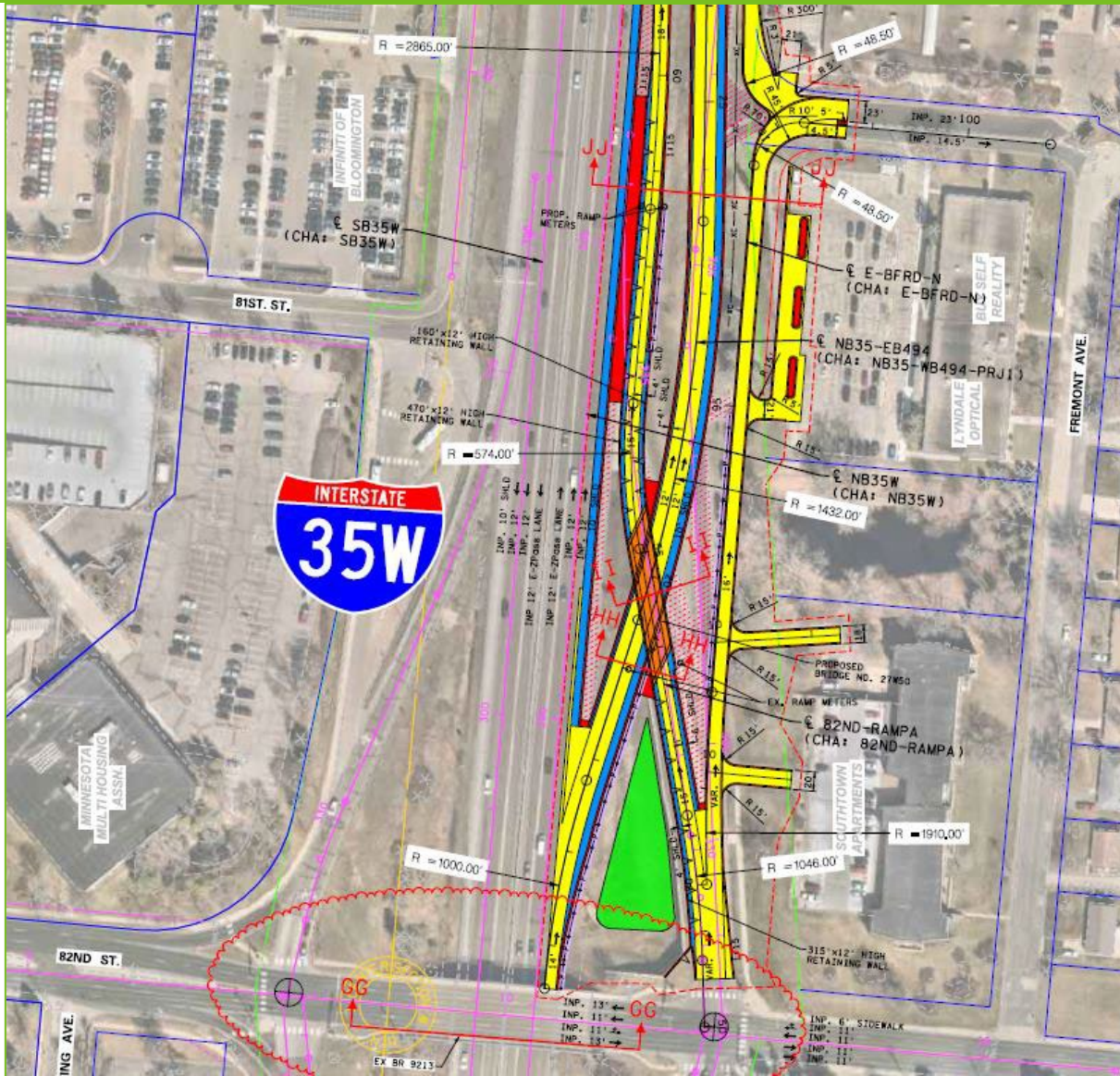
New pavement & bridge infrastructure
New frontage road system
Noise walls & retaining walls

Penn Ave Braid Bridges



Improve safety & mobility
Cannot access 35W to / from Penn

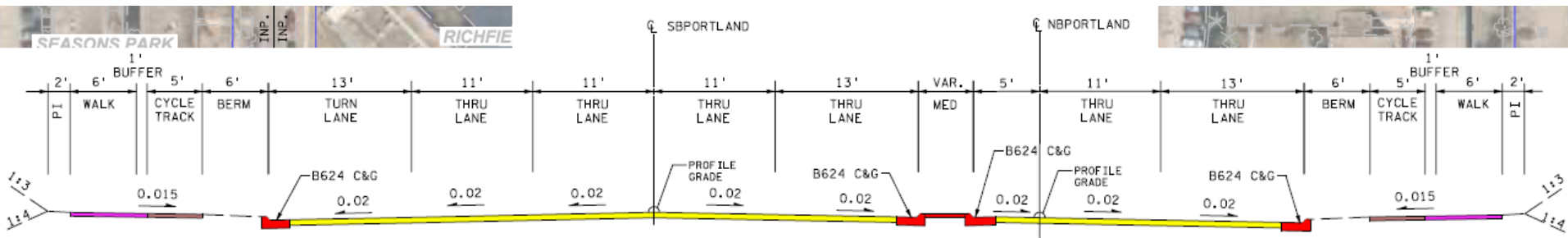
82nd St Braid Bridge



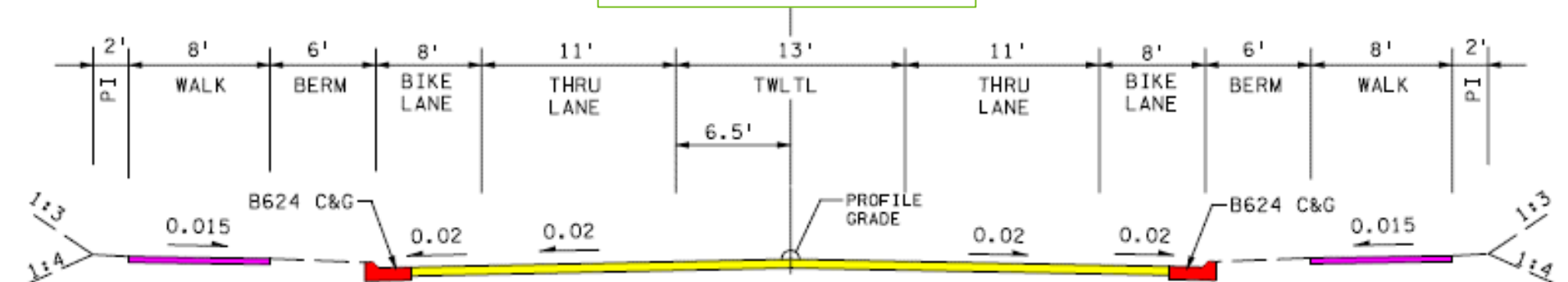
Improves safety & mobility
Cannot access 494 from 82nd St

Bicycle and Pedestrian Facilities

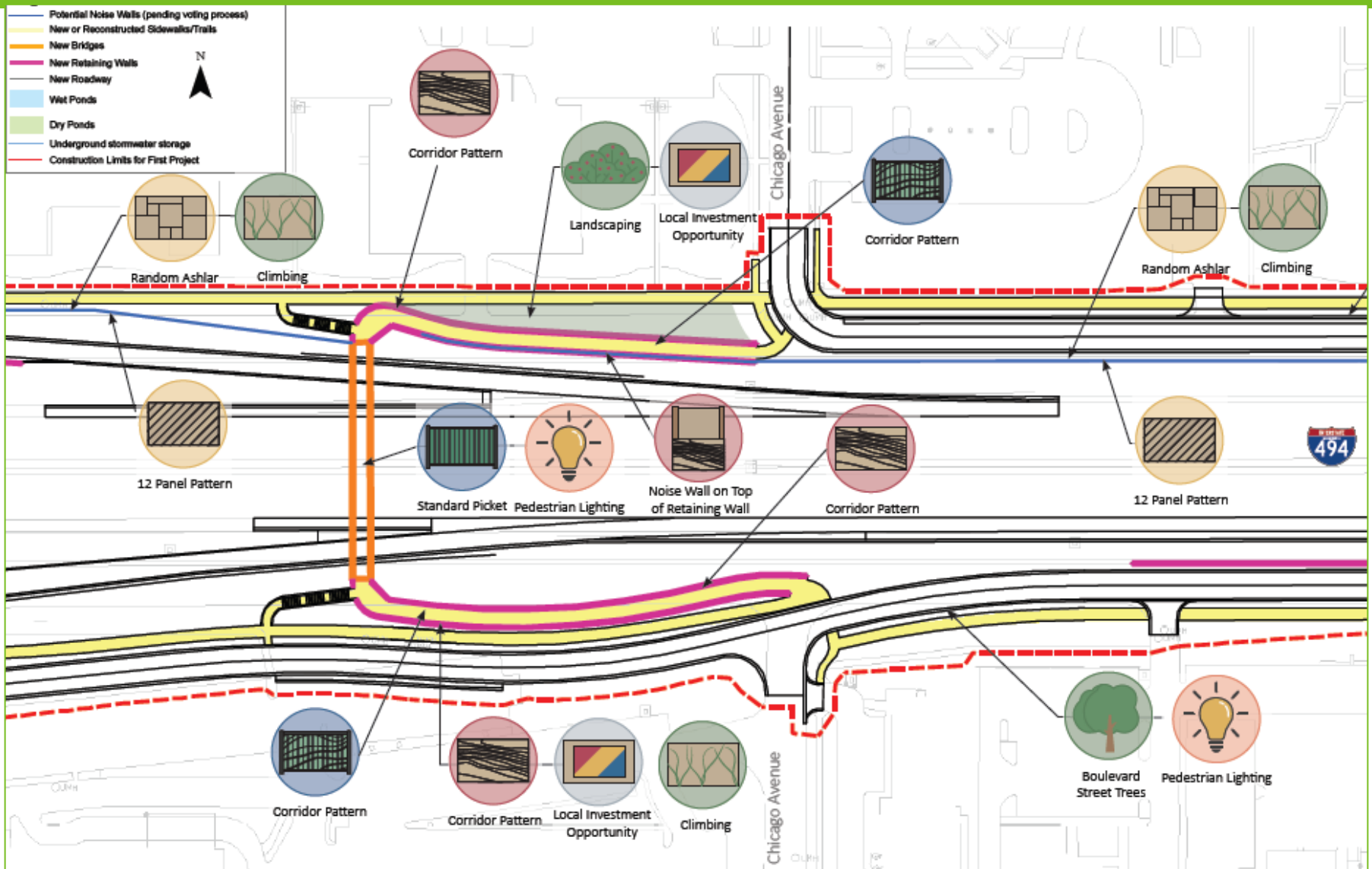
Portland Ave



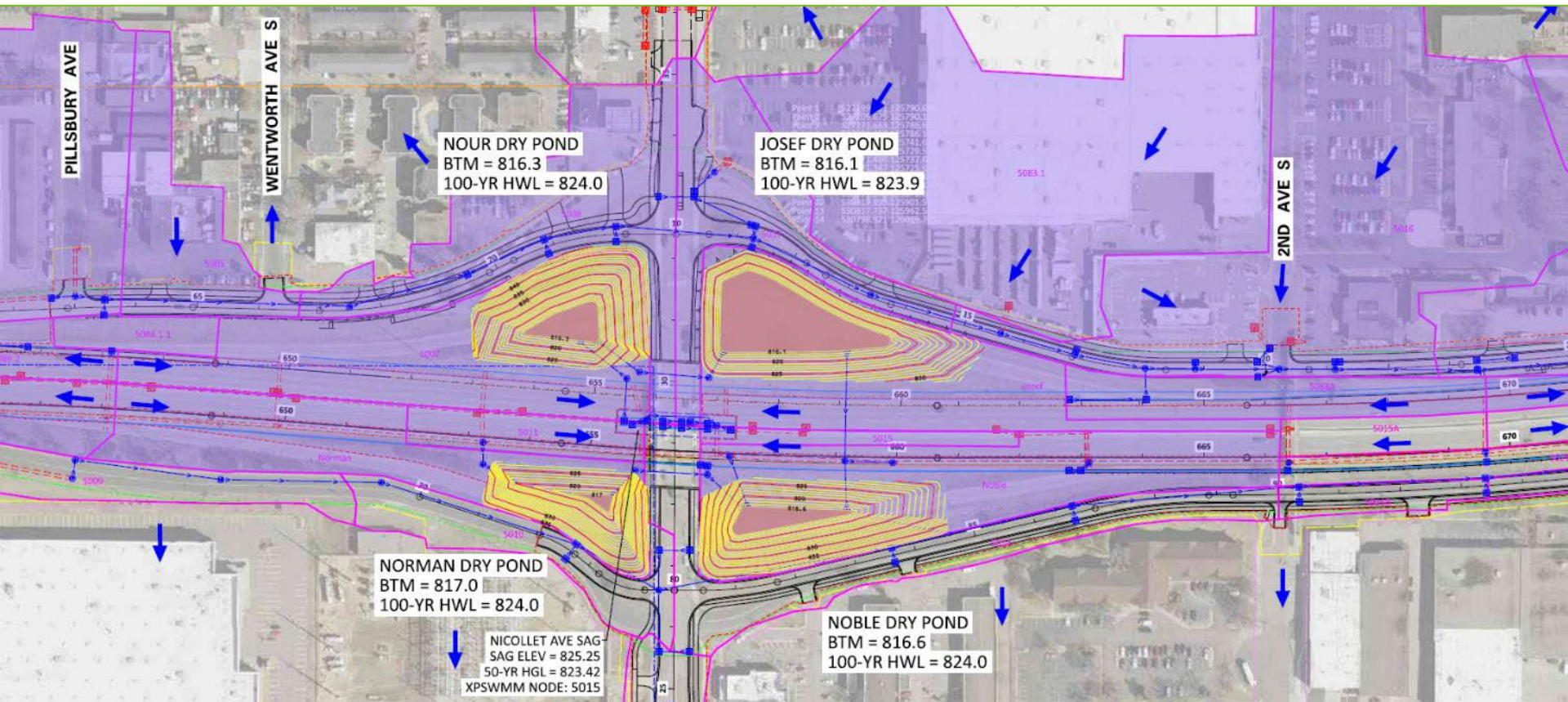
Nicollet Ave



Visual Quality



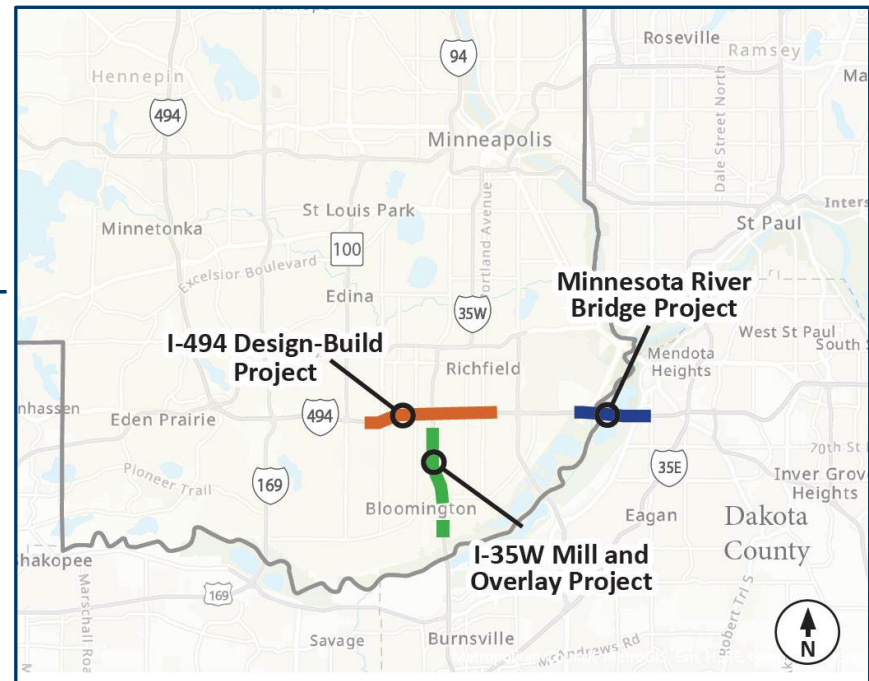
Drainage



Minimize flooding in low points

Communications

- Kimley-Horn to manage communications for the 3 MnDOT projects near the airport
 - I-494: Airport to Hwy 169 Design-Build Project
 - I-494: MN River Bridge
 - I-35W Pavement Preservation
- Similar coordination to TH 5 Airport project



Public Information

- Public Information Hotline

- info@i494Construction.com
- 651-583-6435

- Visit the project websites

mndot.gov/metro/projects/i494edina-richfield/index.html (construction)

Sign up for project email updates (bottom right of page)

mndot.gov/metro/projects/i494-airport-hwy169/ (study)

511mn.org (traveler information)



I-494 Minnesota River Bridge

Project Improvements

Repair MN River bridge deck and substructure

Repair three other bridges

Repair concrete pavement on I-494

Reconstruct regional trail



Construction Schedule

- **3 years: 2023-2025**
- 2023
 - Main work on inside median; some lane closures and shifts
- 2024
 - Traffic reduced to 2 lanes each direction on EB bridge while WB bridge is repaired
 - Temporary ramp for Hwy 5 to maintain MSP access
 - Short closure of 24th Ave ramps, detours to MOA
 - Surface repairs on pavement and bridges west of river
- 2025: Same thing, other direction
 - River bridge trail closed all summer

Project Contacts

- Public Information Hotline

- info@i494Construction.com
- 651-583-6435

- Visit the project website

www.dot.state.mn.us/metro/projects/i494mnriverbridge/index.html

I-35W Resurfacing – Project Improvements

I-35W Bloomington

- Mill and overlay, drainage, ADA limits
- Auxiliary lane



Resurfacing 106th to 82nd

Auxiliary lane between 106th and 98th (both directions)

Improve ramps, sidewalks and signals at 106th, 98th, 94th, and 90th intersections

Drainage improvements

Construction Impacts and Schedule

- Two more weekend closures of SB 35W
- Alternating exit / entrance ramp closures
- Drainage, overhead signs, lighting, etc.
- **Complete by September 1, 2023**

Project Contacts

- Public Information Hotline

- Info@I35WBloomington.com
- 651-728-4638

- Visit the project website

www.dot.state.mn.us/metro/projects/i35w-bloomington/index.html

Questions

Tim Clyne

MnDOT I-494 DB Construction Manager

651-775-1176

timothy.clyne@state.mn.us

Commuter Services: Solutions to ease your commute (and save your sanity)



Strategies and Commute Resources for Employers

- Host a Commuter Fair, e-Fair, Lunch and Learn or seminar
- Promote Try It campaigns through Commuter Services
- Promotion of commute options in a company newsletter, intranet posts, blogs or direct email
- Commute resources for new hires
- Sign up for our quarterly employer newsletter
- Sign up for our monthly commuter newsletter
- Poster outlining Commuter Services' resources
- Display of commute resource materials with bus schedules



Bicycle commuting resources and strategies for employers

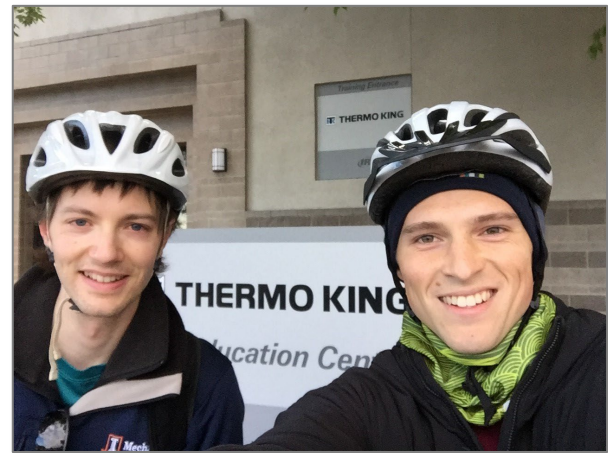
Employers can:

- Hold an on-site bicycle safety check
- Offer a Lunch and Learn or webinar on how to bike to work
- Provide showers and lockers
- Provide indoor or covered bike parking
- Offer bike repair materials: tire pump, patch kits, tools
- Purchase bicycles employees can use over lunch for errands or exercise



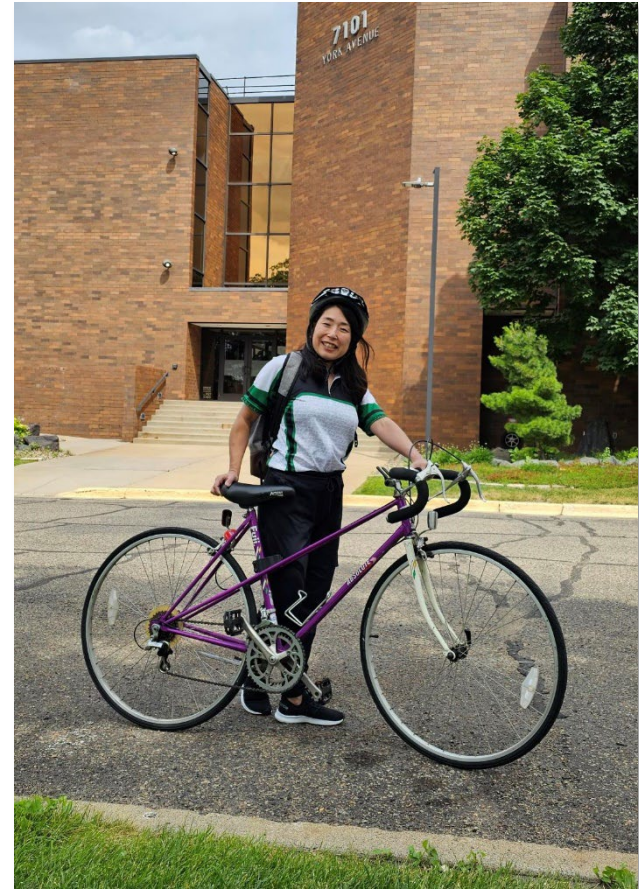
Commuter Services can help you:

- Provide free bicycle commute resources and area trail updates
- Receive free outdoor bicycle rack from Commuter Services
- Provide demonstrations on how to place a bicycle on transit



Bicycle commuting resources and strategies for commuters

- Sign up for Bike Trail Updates (email)
- Watch on-demand bike to work commuting webinars
- Ask for a demonstration on how to put your bike on transit
- Request free resources:
 - Bicycle Commuting Guide with tips for riding in traffic
 - Hennepin County Bike Map
 - Clothing recommendations
 - Winter Bike Commuting Guide
 - And more!



Transit updates and resources for employers

- Offer Metropass discounted transit pass with unlimited rides
- Personalized transit information for your worksite: schedules, maps, collateral materials for your worksite



Transit resources for commuters

- Customized bus/train route itinerary with schedules plus two free ride passes
- Transit Assistance Program (TAP) information
- METRO System Brochure
- Transit system map
- Text for Safety
- Reloadable passes



Carpool assistance for employers

- Assist employers and commuters with formation of carpools and vanpools
- Create maps for employees to see how many people live near them for ride matching
- Conduct meetings to gather employees by home location to help form carpools and vanpools
- Provide carpool and vanpool preferred parking signs; we manage program for you



Carpooling for commuters

- Tips on how to set up a successful carpool
- Free carpool matching program
- Many employers offer preferential parking
- Other advantages:
 - Use HOV lane for free during peak hours with two or more riders
 - Save money on gas



Metro Vanpool: Employer advantages

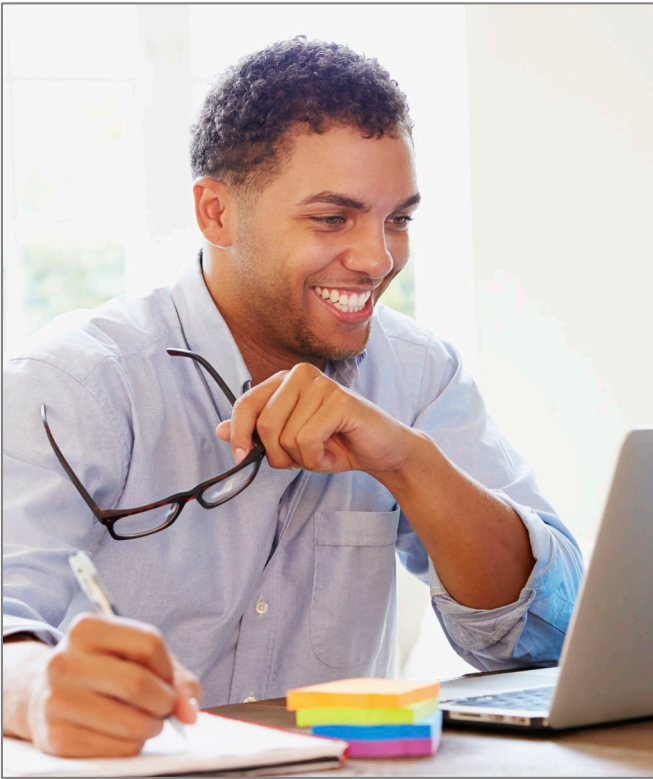
- Commuter Services available to assist employers in setting up a company program
- Metropolitan Council provides 50 percent subsidy on each vanpool
- Employers can choose to subsize
- Tax benefits



Metro Vanpool for commuters

- Ideal for longer commutes
- Need just four people to start vanpool
- 50 percent of each vanpool is subsidized by the Met Council
- Lease agreement between primary driver and Commute with Enterprise
- Lease includes maintenance, repairs, \$1 million liability insurance, 24-hour roadside assistance
- Flexible: 30-day notice to leave or terminate
- Tax benefits available





Free resources for employers,
managers and teleworkers

Online, anytime: tctelework.com

Free telework/hybrid work resources

- 🌱 Sample telework and hybrid policies
- 🌱 Teleworker agreement
- 🌱 Implementation guidance
- 🌱 Consulting on best practices
- 🌱 Training for managers on how to manage remote workers
- 🌱 Ask the Expert
- 🌱 On-demand webinars
- 🌱 Mental health resources
- 🌱 Ergonomic and home office recommendations
- 🌱 FOMO resources for managers and teleworkers
- 🌱 Quarterly newsletter
- 🌱 And many more telework/hybrid resources



More resources for commuters and employers

Guaranteed Ride Home

- Provides “peace of mind” for commuters who take sustainable trips three or more days per week
- Paid for by the Metropolitan Council, free to the commuter
- Registered participants get up to \$100 annually in rides (Uber, Lyft, transit, etc.)

Stay in the know with our newsletters

Commuter newsletter: Monthly email, features regular updates on all road construction projects along with transit, bike commuting and telework news

- Sign up at: 494corridor.org

Employer newsletter: Quarterly email with information about sustainable commute programs, road construction updates, transit improvements and more

- Sign up by emailing Kate Meredith: kate@494corridor.org

Twin Cities Telework newsletter: Quarterly email featuring telework and hybrid trends, best practices, tips to start and maintain your work from home programs, and more

- Sign up at the Twin Cities Telework website: tctelework.com

Questions?

For more information:

Melissa Madison

Executive Director

Email: melissa@494corridor.org

Phone: 952-405-9425

Kate Meredith

Vice President

Email: kate@494corridor.org

Phone: 612-750-4494

Thank you for joining us